

TESSA



MATTHEWS

WINTON

4 BED
2.5 BATH

HEATED SF: 2,175

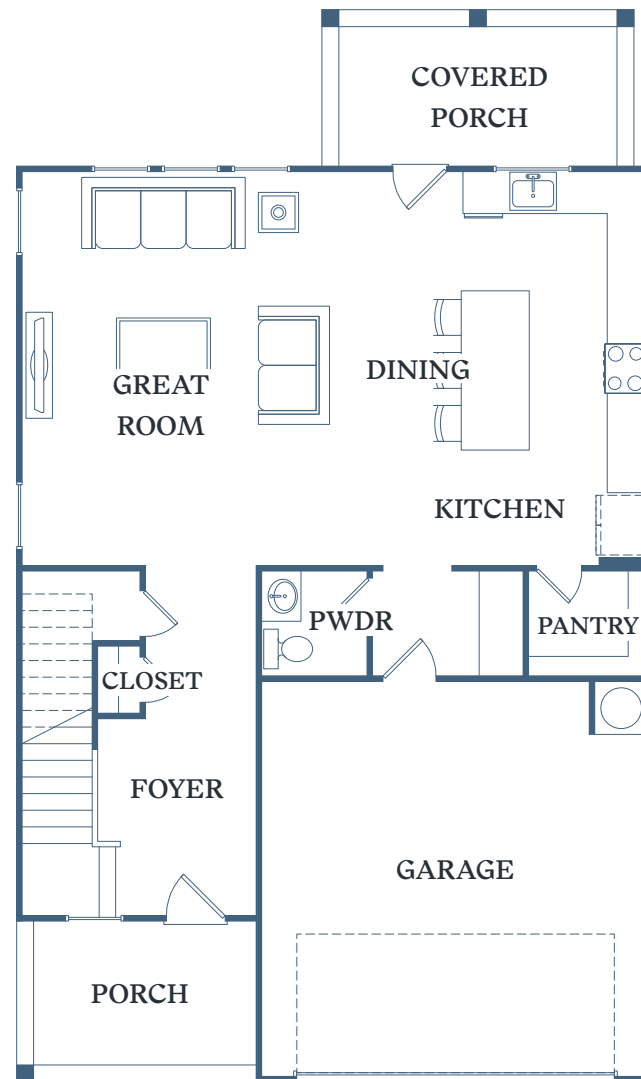
GARAGE SF: 399

PORCH/PATIO SF: 227

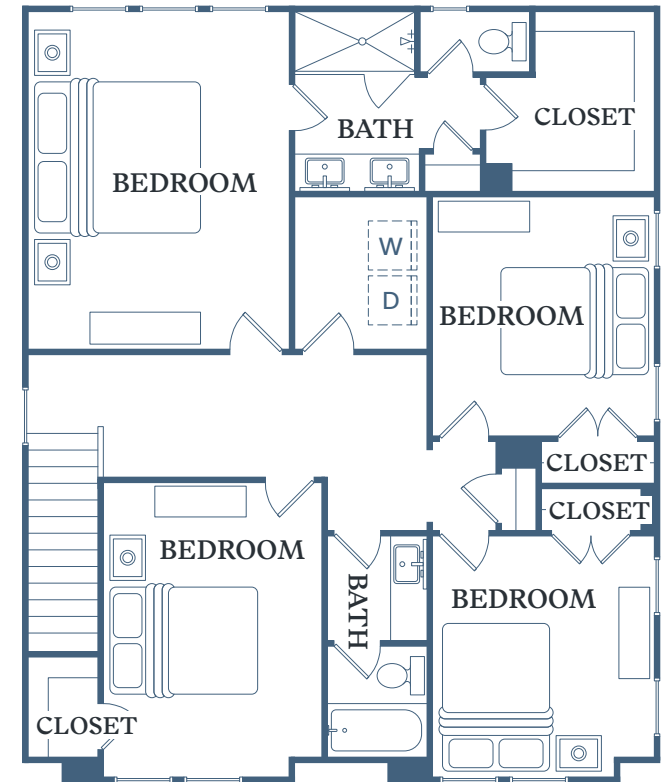
TOTAL SF: 2,801

3110 Doe River Way
Matthews, NC 28105

TessaMatthewsNC.com



1ST FLOOR



2ND FLOOR

Information is believed to be accurate, but not warranted. Specification, pricing and availability are subject to change without notice. See agent for details. Artist's renderings and floorplans are approximate only and are not meant to be exact depictions of the unit. Drawings are not to scale. Your selected floorplan may vary from this illustration due to design configuration and architectural styling. Not all features are available in every apartment. All square footages are approximate.

